

TECHATRONICS

Instrumentation, Automation, Design, and Service



Instrumentation Automation and Design



Techatronics is an Engineering Firm that specializes in the Automation and Design of Measurement Equipment.

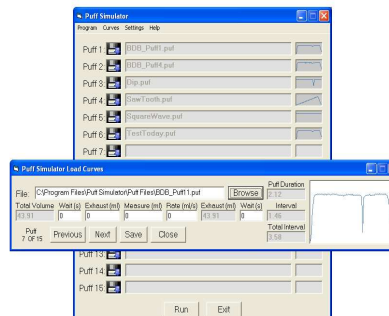
We merge the latest techniques in software with precision engineering to control and automate your entire lab or factory.

Puff Simulator PS 454

The PS 454 is a state-of-the-art Single Port Smoking Machine that was custom designed for the research and development laboratories to replicate human smoke topography. It can replicate the actual puff profile of an individual person and has the flexibility to adjust or build the desired profiles. This instrument will integrate into your current lab and give you the ability to collect and deliver various methods of smoke topography to your analytical instruments. The PS 454 is capable of producing the industry standard puff profiles including: Square, Saw Tooth, Sinusoidal, Coresta, and Others. The PS 454 is fully configurable.

Specifications:

Standard SM 450 Smoke Engine	
Max Puff Volume 70cc	Max Flow Rate 42cc/sec
Max Puff Duration 30sec	
Program up to 15 puffs	
Each puff can have a different Puff Profile, Puff Volume, Puff Duration, and Interval.	
Replicate Human Smoke Topography	Standard USB Interface
Intuitive HMI interface	Configurable upon Request



We Make Your Success Automatic

Call us today!

(336) 830-4759

info@techatronics.com